

RAIN GARDEN PLANTS PARTIAL SHADE

3-6
Hours

color-full



Photo: Prairie Nursery

HAREBELL (Jun-Sep)
Campanula rotundifolia



Photo: Prairie Nursery

BUTTERFLY WEED (Jun-Aug)
Asclepias tuberosa

dry

medium

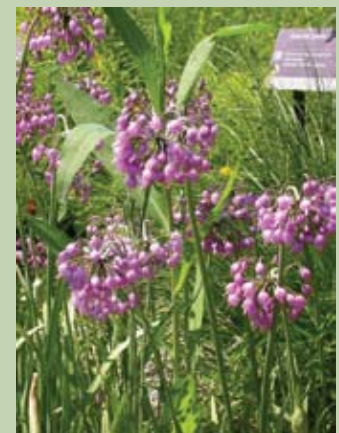


Photo: Missouri Botanical Garden

NODDING ONION (Jul-Aug)
Allium cernuum



Photo: Prairie Moon Nursery

GOLDEN ALEXANDERS (Apr-Jun)
Zizia aurea



Photo: University of Kentucky

LITTLE BLUESTEM
Schizachyrium scoparium

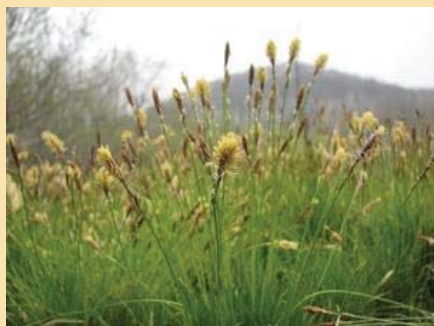
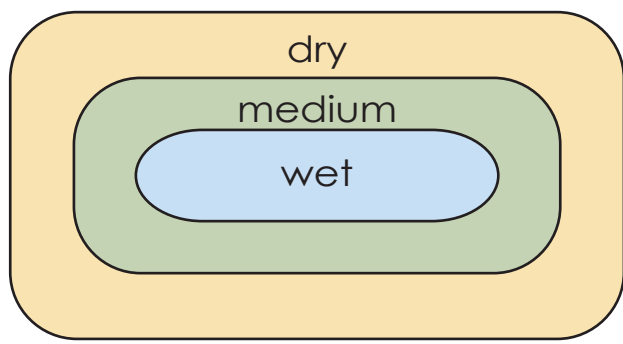


Photo: Prairie Moon Nursery

COMMON OAK SEDGE
Carex pensylvanica



RAIN GARDEN LAYOUT

Notes:
Plants are 3' tall or less.
Follow spacing guidelines for each plant species or assume 12-18" spacing.
Gardens may require watering during the first year.
Bloom times may vary.



Photo: USDA-NRCS

BLACK-EYED SUSAN (Jun-Oct)
Rudbeckia hirta



Photo: Prairie Moon Nursery

SILKY ASTER (Aug-Oct)
Aster sericeus



Photo: Prairie Nursery

ZIG ZAG GOLDENROD (Aug-Oct)
Solidago flexicaulis



Photo: Prairie Nursery

WILD IRIS (May-Jul)
Iris shrevei



Photo: Missouri Botanical Garden

BLUE LOBELIA (Jul-Oct)
Lobelia silphilitica



Photo: Prairie Nursery

BROWN FOX SEDGE
Carex vulpinoidea

wet

www.cityofmadison.com/engineering/stormwater/raingardens.cfm

